

**RESEARCH**

**MULTIPLE  
DOSAGE  
MFG**

**PILOT  
PLANT**

**EU-GMP/  
MHRA/  
SAHPRA**

**FMD  
READY**

**S Kant**  
HEALTHCARE Ltd.

**EXHIBIT  
BATCH  
FOR BE**

**eCTD**

**PACKING  
DEVELOPMENT**

**INTEGRATED  
SUPPLY  
CHAIN**

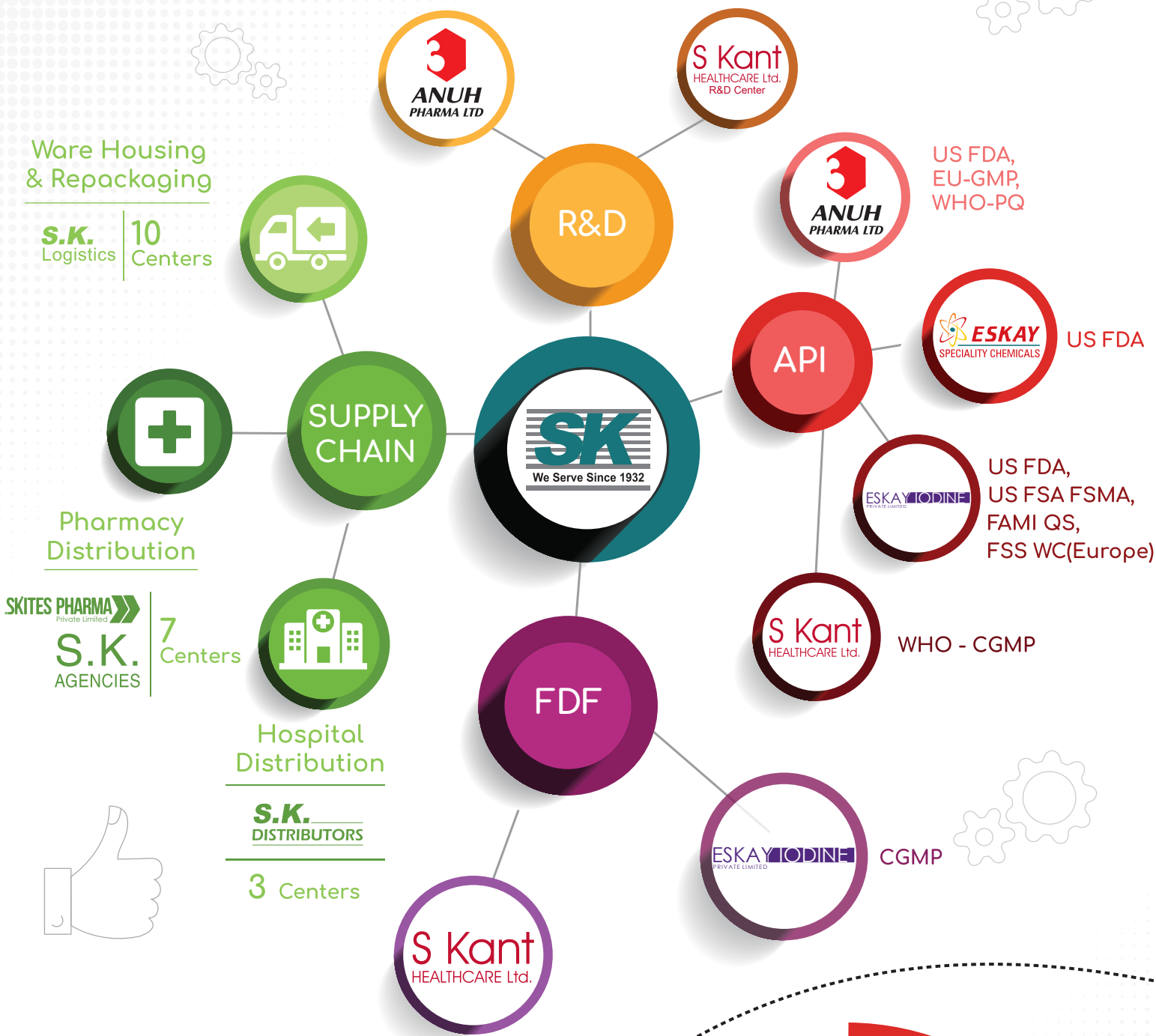
**S Kant**  
HEALTHCARE Ltd.

**YOUR ONE-STOP  
SOLUTION !**



[www.skant.com](http://www.skant.com)

# SK GROUP Serving Since 1932



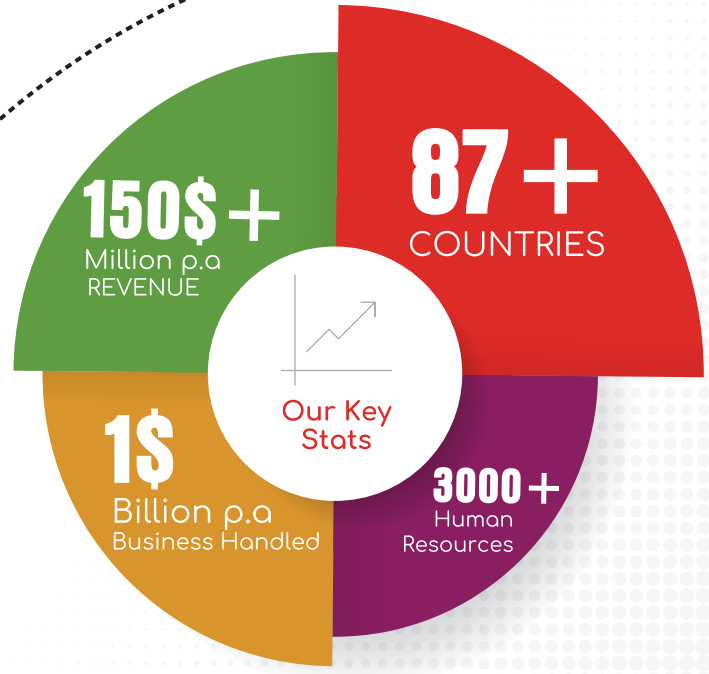
## CSR INITIATIVES:

### EDUCATION:

- SK College of Business Management
- SK School of Business Management
- SK College of Science & Technology
- SK Convention Center
- SK Balmandir ( Playschool)
- SK Vocational Classes

### HEALTHCARE:

- SK Diabetic Retinopathy Care Center
- SK Sumangal Medical Center
- SK Blood Bank



# S kant HEALTHCARE Ltd - Your CMO Partner !

## COMPANY OVERVIEW

- Incorporated in 1996
- EU GMP CERTIFIED 45,000 SQ.M FDF FACILITY
- Manufacturing Partner For EU, MHRA, TGA , SAHPRA,etc
- Independent State of the Art R&D Center
- APIs & Excipients Mfg
- Integrated Supply Chain from API to Finished Product \*



## OUR HISTORY

- 1996: Year of Incorporation
- 2014: EU GMP for OSD
- 2016: R&D Center
- 2017: EU GMP for all dosage forms
- 2018: UNICEF Approval



## MILESTONES

- 35\$** Million p.a Revenue
- 500+** Employees
- 87+** Countries
- 1500+** Valid products registrations globally

## LOCATIONS



Head quarter:



Worli, Mumbai. India.  
Tel.: +91 226622 7575

Manufacturing:



Vapi, Gujarat. India.  
Tel.: +91 260 6549517

R & D Center:



Navi Mumbai. India.  
Tel.: +91 82912 85757

**S Kant**  
HEALTHCARE Ltd.

## CERTIFICATION



## CONTACT



Kalpesh Shah  
Nishit Shah  
Harshit Shah



cmo@skant.com



www.skant.com



+ (91-22) 6622 7575



S Kant Healthcare Ltd.

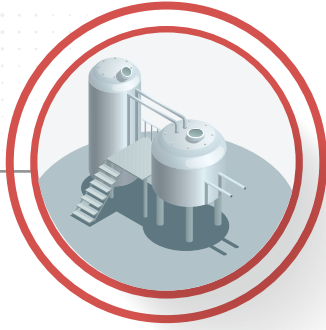


# M A N U F A C T U R I N G



## RM/PM Warehouse

- 3000 Sq.Meter warehouse for storage of Raw Material & Packing Material
- Temperature controlled from 2°C up to Ambient Temperature
- Dedicated Storage Area for Flammable Material
- Dedicated Storage Area for Controlled Substances



## Production

### Oral Solids

- **Annual Capacities:**  
Tablets: 2 Bil Units.  
Capsules: 600 Mil Units.  
Dry Syrup: 15 Mil Units.
- Dedicated Pilot Plant For: Scale Up/Tech Transfer/ Exhibit Batches.
- Packing Lines for Blister, Strip & Bulk Packing.

### Oral Liquids

- **Annual Capacities:**  
Clear Syrup: 60 Mil Bottles.  
Oral Suspension: 60 Mil Bottles.
- Dedicated Pilot Plant For: Scale Up/Tech Transfer/ Exhibit Batches.
- Packing Lines for Glass & Pet Bottles with CRC Capping

### Topical

- **Annual Capacities**  
Ointment ,cream, gel  
45 million tubes.
- Experienced Tech Transfer Team for development & filing of products for EU, MHRA, TGA , SAHPRA,etc
- High Speed Lines for filling in Alu & Lami Tubes.Jar packing also available.



## Packing

- 14 Packing Lines across multiple dosage forms.
- Track & Trace Ready for FMD Compliance
- Pharmacode Readers & Blister Inspection Systems installed
- High Speed Cartonators for packing of patient packs.



## Quality Check

- Server Controlled Instruments such as HPLCs, GC, UV, FTIR, TOC.
- Microbiology Section with required Infrastructure & Controls
- Walk-in Stability Chambers covering all ICH zones & photostability.
- Dedicated Analytical Method Validation/Transfer Cell for MA Site Transfer & Development Projects



## Dispatch Warehouse

- 3000 Sq. Meter Warehouse for Storage of Finished Product.
- Experience in shipment of temperature controlled products.
- ERP Controlled Batch Release & Dispatch

# RESEARCH



## Overview

- Independent State-of-the-Art R&D Center for development of finished dosage forms.
- Contract & Co-development for EU/MHRA/WHO-PQ/SAHPRA/TGA
- Knowledge bank of 60+ Scientists of Doctorate & Post Graduate Level.



## Formulation Development

- Oral Solids: Tablet | Capsule | Dry Syrup  
Oral Liquids: Clear Syrup | Suspensions  
Topicals Preparations: Cream | Ointment | Gel
- Experience in development of dispersible, extended release & taste masked formulations.
- Experienced Team for Scale up from Lab scale to Exhibit batch scale at S Kant's EU GMP Site/ MA holder's CMO Site.



## Analytical Development

- Sophisticated Analytical Instruments such as HPLCs, UV, Dissolution apparatus.
- Diffusion cell for IVRT Testing, & Viscometers for Oral Liquid & Topical Preparations.
- Stability Chambers for all ICH Zones & Photostability .



## Packing Development

- In house team for evaluation of RLD Primary Packing Material & new packing material development.
- Lab Scale Blister Machine, Tablet, liquide for packing material trials prior to commercialization.
- Artwork team well acquainted with regulatory requirements such as pharmacode, FMD Compliance, GS1, etc.



## Regulatory Affairs

- In House team for compilation of CTD Dossiers for filing.
- Tie-up with industry experts for IPR, eCTD preparation & BE studies.

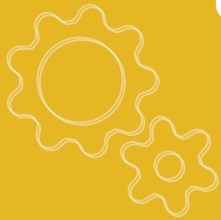


QUALITY HAS BEEN  
THE ONLY PLAN AT

SK GROUP

SINCE

1932



S Kant  
HEALTHCARE Ltd.

[www.sk1932.com](http://www.sk1932.com) | [www.skant.com](http://www.skant.com)

[cmo@skant.com](mailto:cmo@skant.com)